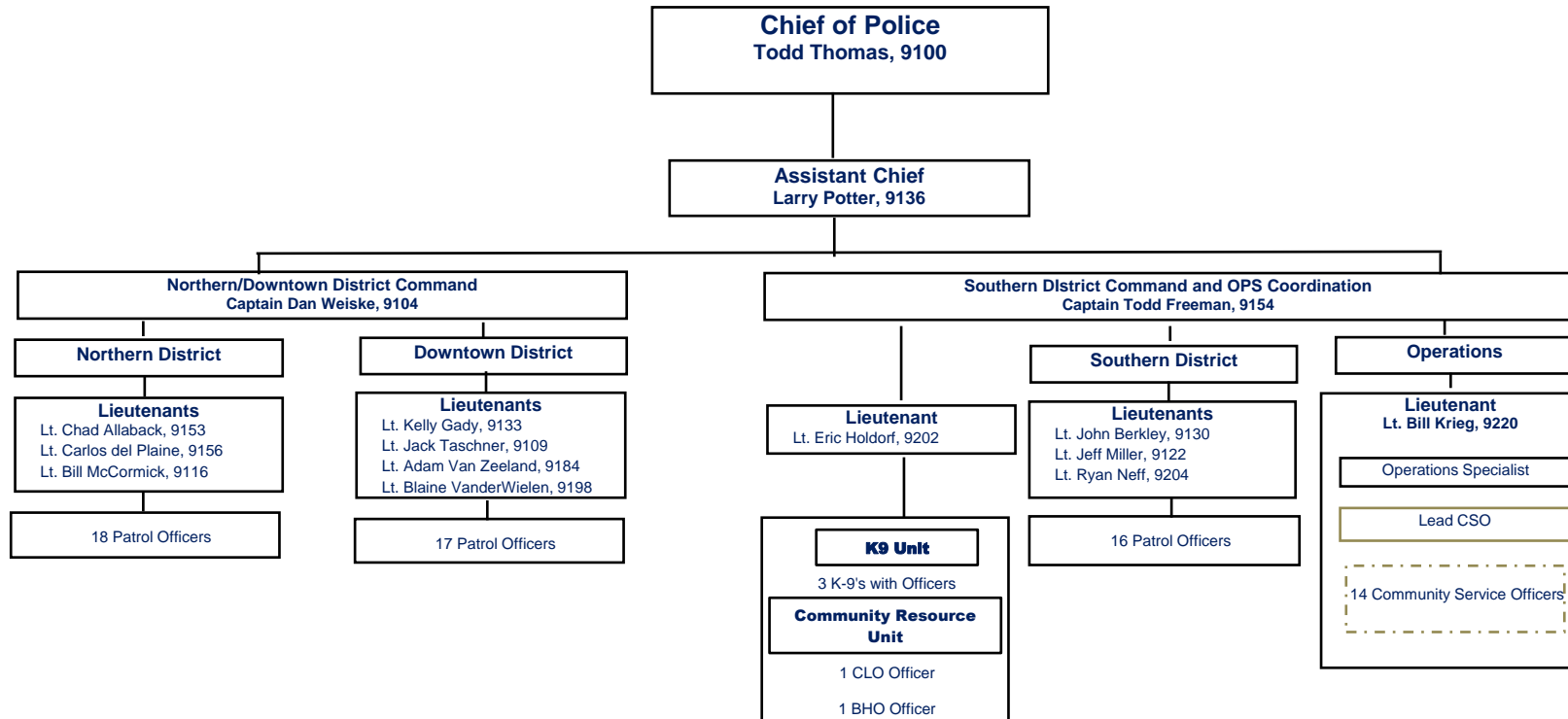
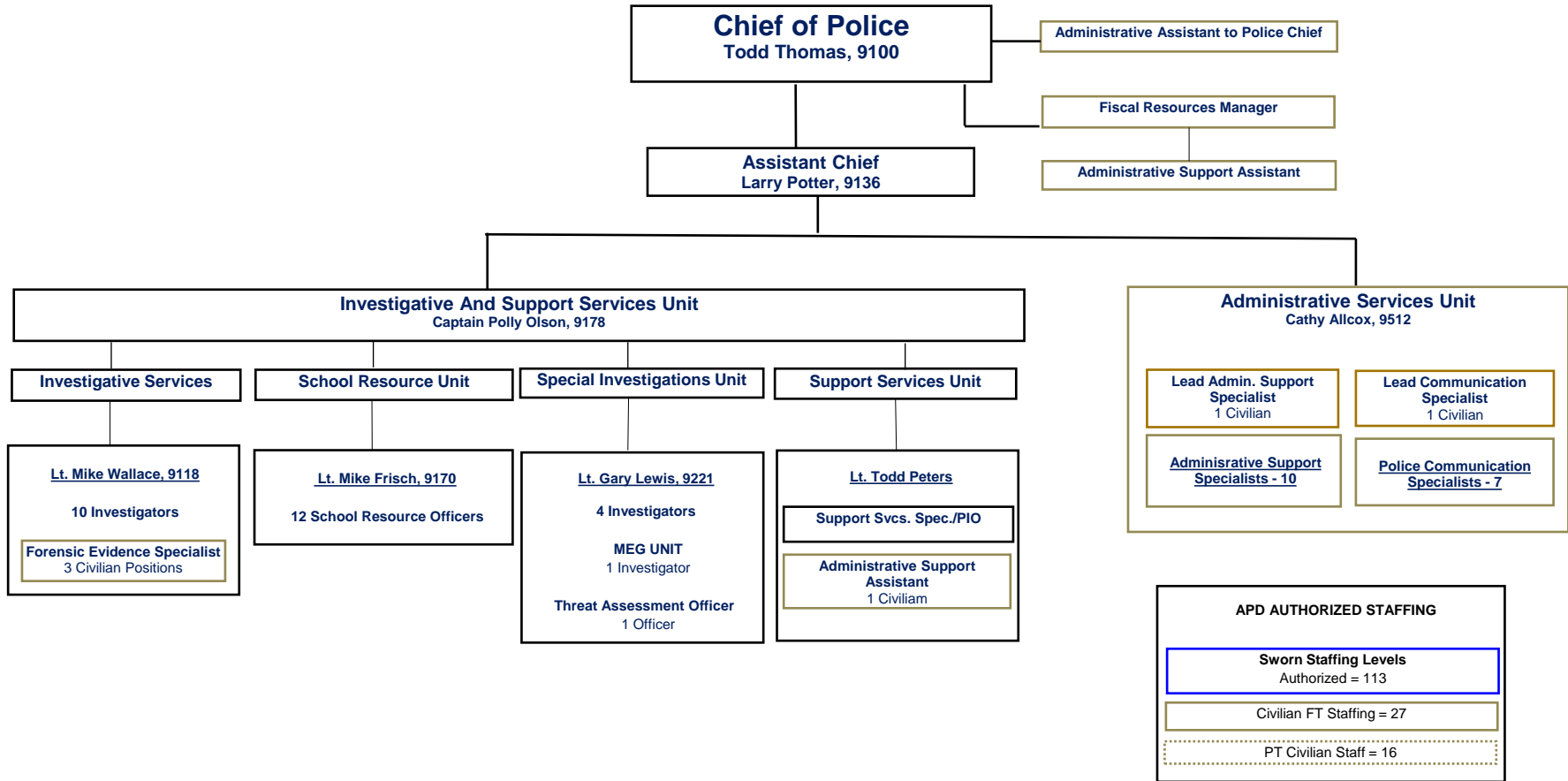


**APPLETON POLICE DEPARTMENT
ORGANIZATIONAL CHART**



APPLETON POLICE DEPARTMENT ORGANIZATIONAL CHART



Chief of Police
Todd Thomas, 9100

Administrative Assistant to Police Chief

Fiscal Resources Manager

Administrative Support Assistant

Assistant Chief
Larry Potter, 9136

Investigative And Support Services Unit
Captain Polly Olson, 9178

Investigative Services

School Resource Unit

Special Investigations Unit

Support Services Unit

Lt. Mike Wallace, 9118
10 Investigators
Forensic Evidence Specialist
3 Civilian Positions

Lt. Mike Frisch, 9170
12 School Resource Officers

Lt. Gary Lewis, 9221
4 Investigators
MEG UNIT
1 Investigator
Threat Assessment Officer
1 Officer

Lt. Todd Peters
Support Svcs. Spec./PIO
Administrative Support Assistant
1 Civilian

Administrative Services Unit
Cathy Allcox, 9512

Lead Admin. Support Specialist
1 Civilian

Lead Communication Specialist
1 Civilian

Administrative Support Specialists - 10

Police Communication Specialists - 7

APD AUTHORIZED STAFFING

Sworn Staffing Levels
Authorized = 113

Civilian FT Staffing = 27

PT Civilian Staff = 16