



## City of Appleton Fire Department Outdoor Fireplace Permit Requirements

Section 6-13 of the City of Appleton Municipal Code provides regulations relating to the use of outdoor fireplaces. With the exception of fires fueled by natural gas, propane and charcoal, a permit must be obtained by the fire department prior to having any outdoor fire. The permit must be approved by the Fire Chief or his designee, and includes an inspection of the appliance and the site to be used for burning. Applicants are encouraged to speak with surrounding neighbors regarding outdoor fire usage. Nuisance complaints from neighbors could result in loss of permit.

**NOTE: No permit shall be granted for open burning for multi-family occupancies (3 or more). Permits for duplexes require property owner's written permission. Permits for single-family occupancies that are not owner-occupied also need written permission from the owner.**



1. Type of permit:
  - Daily (single use) ..... \$15.00
  - Seasonal (multiple use).. \$30.00 (January 1 through December 31)
  - Seasonal renewal ..... \$30.00



2. Appliance:
  - a. Above-ground appliances must include:**
    - Non-tipping base, screen enclosure, covered top
    - Maximum size 33" in diameter or 6 sq. ft.
  - b. In-ground appliances must include:**
    - Lined with dirt or a non-combustible material (steel or masonry)
    - Screen enclosure, covered top
    - Maximum size 33" in diameter or 6 sq. ft.
    - Extends a minimum of eight inches (8") above ground



3. A site inspection will be completed prior to issuing a new permit. Renewal permits do not typically require a re-inspection unless there has been a change to the burning appliance or the location of burning.



4. Fire must be placed a minimum ten (10) feet from any building, structure, fence, combustible material or property line. Be sure to keep children and pets away.



5. A water hose, 5-gallon water bucket, or fire extinguisher must be available at the location of the fire.



6. Only natural wood or manufactured fireplace logs may be burned. Do not burn treated, painted or stained wood. Do not burn leaves, newspapers or garbage.



7. Wind may not be in excess of 9 mph.



8. Burning times:
  - Sunday – Thursday: 6:00 a.m. - 10:00 p.m.
  - Friday – Saturday: 6:00 a.m. - 12:00 a.m.
  - Any day/evening preceding a federal holiday: 6:00 a.m. – 12:00a.m.

**Call the Fire Department at 832-5810 for more information.**

Note: Individuals that do not obtain a proper permit will be charged triple the permit fee.

## Indoor Fire Safety Hints And Tips



### (1) Count Your Smoke Detectors

City of Appleton Municipal Code requires smoke detectors in each home. We recommend at least one smoke detector installed on every level of your home, including one in every bedroom and outside each sleeping area. At least one carbon monoxide detector is also recommended.



### (2) Change Your Smoke Detector Batteries

It only takes a moment, but this simple habit is the best defense your family has against the devastating effects of a home fire. Change smoke detector batteries twice per year. An easy way to remember to do so is to "change your clock, change your battery" in the fall and spring.



### (3) Check Your Smoke Detectors Monthly

Check your smoke detectors monthly. After inserting a fresh battery in each smoke detector, push the safety test button to make sure that the detector is in proper working condition. Never disconnect your smoke detector battery! Remember that a "chirping" sound is a signal that it needs a fresh battery.



### (4) Clean Your Smoke Detectors

Clean your smoke detectors each month to keep them clear of dust and cobwebs.



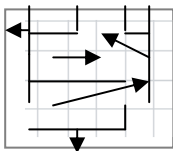
### (5) Replace Your Smoke Detectors

Install brand new smoke detectors every ten years.



### (6) Get The Whole Family Involved

Once smoke detectors are installed and have fresh batteries, you should make sure all family members, including children, know what the smoke detectors sound like and what to do if the detector ever goes off.



### (7) Create A Home Escape Plan

Create a home escape plan. Everyone needs to know two ways out of every room. Remember that practice makes perfect. Designate a meeting place outside the home such as a lamp post, mailbox or tree.



### (8) Call 9-1-1 for Help

Fire doubles in size every 30 seconds so be sure to call 9-1-1 right away. Make the call from a neighbor's home or from a cell phone from outside the burning building.



### (9) Get Out And Stay Out

Never go back inside a burning home. Only one breath of fire's toxic smoke can be lethal. To escape, crawl low where the air is cleaner. Never go back inside. Go to your family meeting place and meet the firefighters when they arrive.

Check out [www.appleton.org/fire](http://www.appleton.org/fire) for more safety tips and resources to keep your family safe!