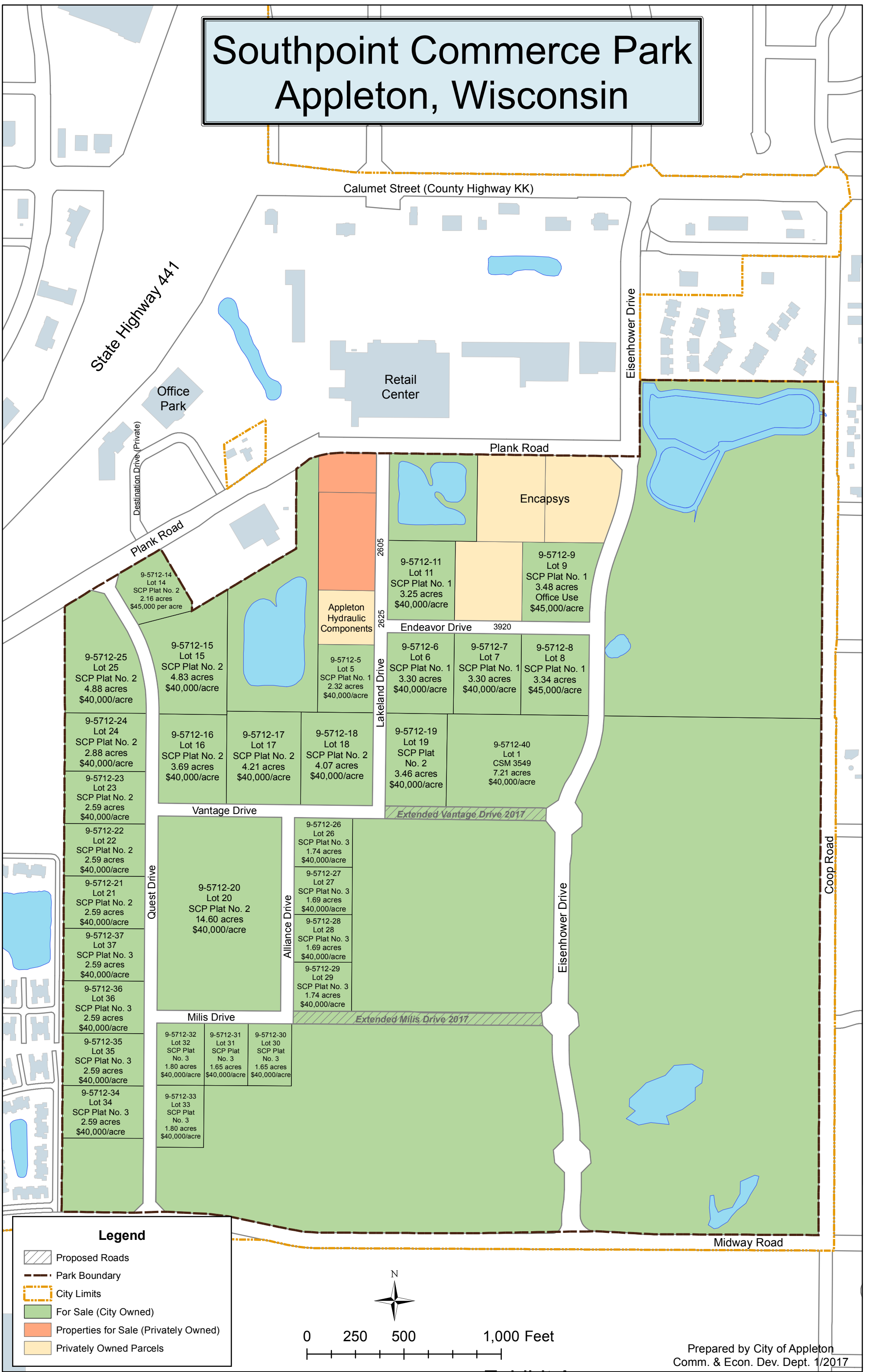


Southpoint Commerce Park Appleton, Wisconsin



State Highway 441

Calumet Street (County Highway KK)

Destination Drive (Private)

Office Park

Retail Center

Eisenhower Drive

Plank Road

Encapsys

Plank Road

9-5712-14
Lot 14
SCP Plat No. 2
2.16 acres
\$45,000/acre

Appleton Hydraulic Components

2605
2625
Lakeland Drive

9-5712-11
Lot 11
SCP Plat No. 1
3.25 acres
\$40,000/acre

9-5712-9
Lot 9
SCP Plat No. 1
3.48 acres
Office Use
\$45,000/acre

9-5712-25
Lot 25
SCP Plat No. 2
4.88 acres
\$40,000/acre

9-5712-15
Lot 15
SCP Plat No. 2
4.83 acres
\$40,000/acre

9-5712-5
Lot 5
SCP Plat No. 1
2.32 acres
\$40,000/acre

9-5712-6
Lot 6
SCP Plat No. 1
3.30 acres
\$40,000/acre

9-5712-7
Lot 7
SCP Plat No. 1
3.30 acres
\$40,000/acre

9-5712-8
Lot 8
SCP Plat No. 1
3.34 acres
\$45,000/acre

9-5712-24
Lot 24
SCP Plat No. 2
2.88 acres
\$40,000/acre

9-5712-16
Lot 16
SCP Plat No. 2
3.69 acres
\$40,000/acre

9-5712-17
Lot 17
SCP Plat No. 2
4.21 acres
\$40,000/acre

9-5712-18
Lot 18
SCP Plat No. 2
4.07 acres
\$40,000/acre

9-5712-19
Lot 19
SCP Plat No. 2
3.46 acres
\$40,000/acre

9-5712-40
Lot 1
CSM 3549
7.21 acres
\$40,000/acre

9-5712-23
Lot 23
SCP Plat No. 2
2.59 acres
\$40,000/acre

Vantage Drive

Extended Vantage Drive 2017

9-5712-22
Lot 22
SCP Plat No. 2
2.59 acres
\$40,000/acre

9-5712-26
Lot 26
SCP Plat No. 3
1.74 acres
\$40,000/acre

Quest Drive

9-5712-20
Lot 20
SCP Plat No. 2
14.60 acres
\$40,000/acre

9-5712-27
Lot 27
SCP Plat No. 3
1.69 acres
\$40,000/acre

9-5712-37
Lot 37
SCP Plat No. 3
2.59 acres
\$40,000/acre

Alliance Drive

9-5712-28
Lot 28
SCP Plat No. 3
1.69 acres
\$40,000/acre

9-5712-36
Lot 36
SCP Plat No. 3
2.59 acres
\$40,000/acre

9-5712-29
Lot 29
SCP Plat No. 3
1.74 acres
\$40,000/acre

Milis Drive

Extended Milis Drive 2017

9-5712-35
Lot 35
SCP Plat No. 3
2.59 acres
\$40,000/acre

9-5712-32
Lot 32
SCP Plat No. 3
1.80 acres
\$40,000/acre

9-5712-31
Lot 31
SCP Plat No. 3
1.65 acres
\$40,000/acre

9-5712-30
Lot 30
SCP Plat No. 3
1.65 acres
\$40,000/acre

9-5712-34
Lot 34
SCP Plat No. 3
2.59 acres
\$40,000/acre

9-5712-33
Lot 33
SCP Plat No. 3
1.80 acres
\$40,000/acre

Legend

- Proposed Roads
- Park Boundary
- City Limits
- For Sale (City Owned)
- Properties for Sale (Privately Owned)
- Privately Owned Parcels



0 250 500 1,000 Feet